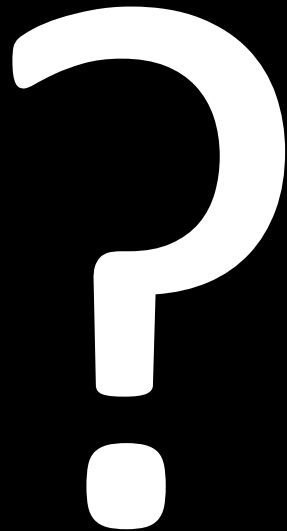


**PREDBEŽNÉ HODNOTENIE
POŠKODENIA VEGETÁCIE
POMOCOU SATELITNÝCH
SNÍMOK LANDSAT V O.O.**

**JAVORINA
(2006 - 2011)**

Mária HAVAŠOVÁ, Libor BURIAN, Rastislav JAKUŠ, Ján FERENČÍK

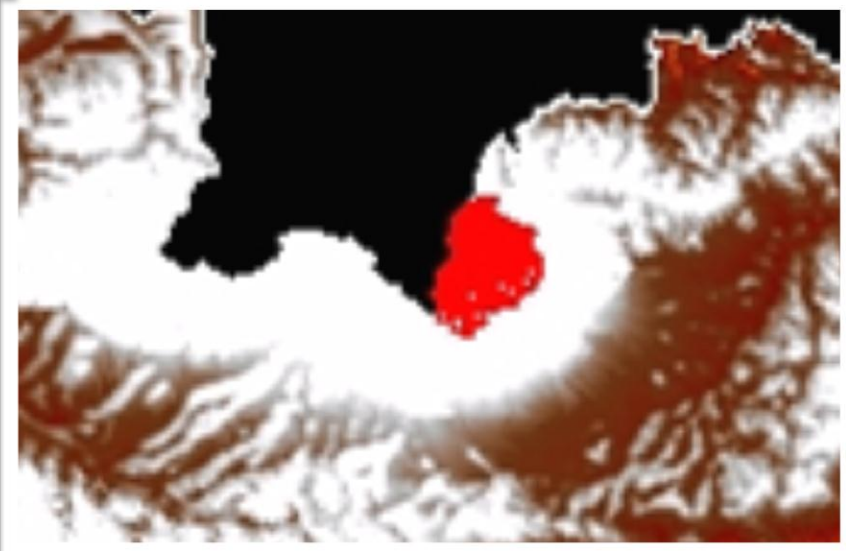
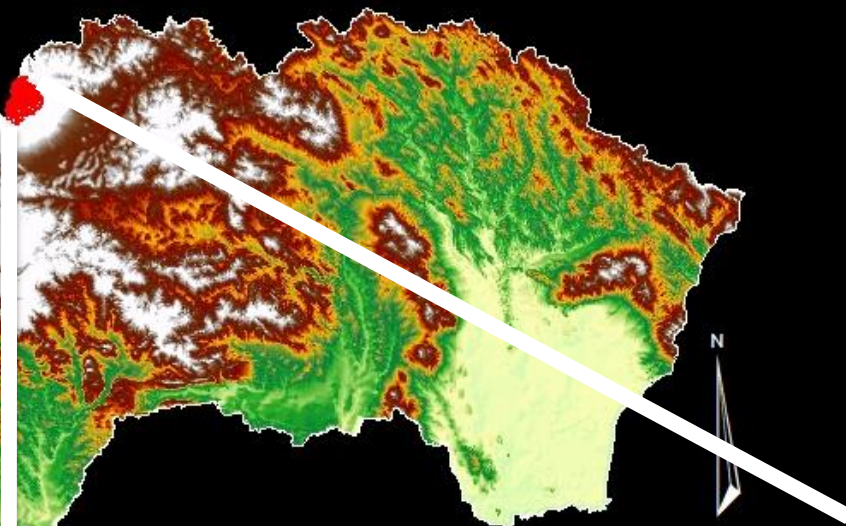
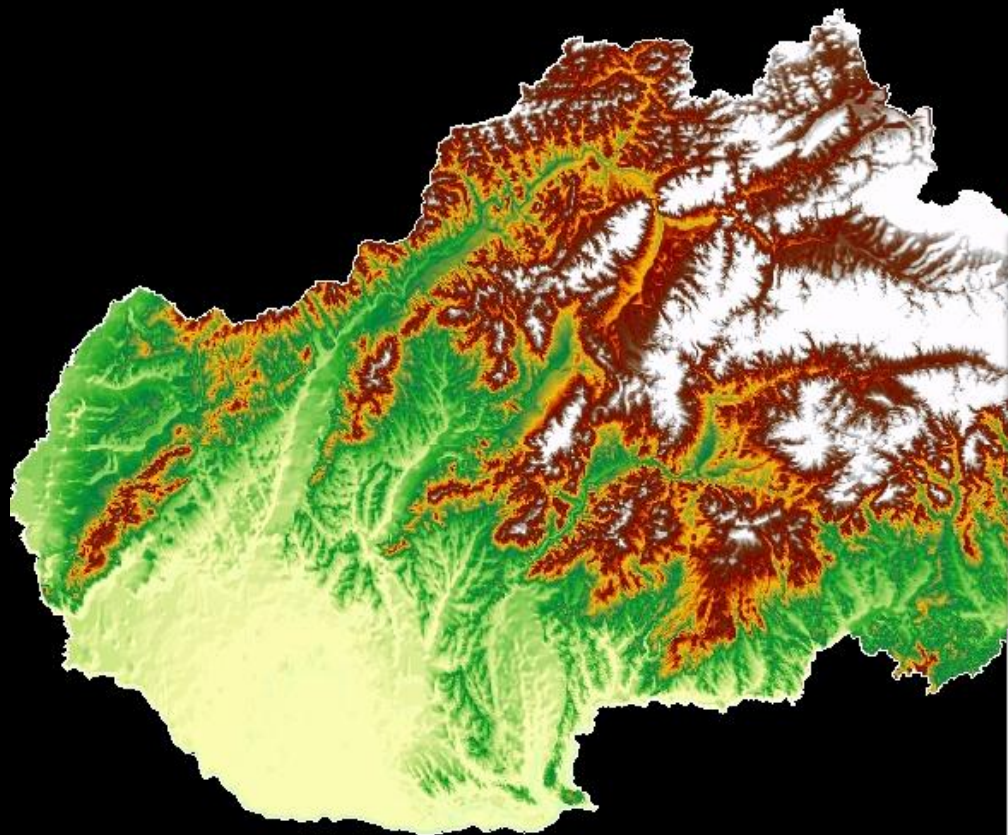
Cieľ práce



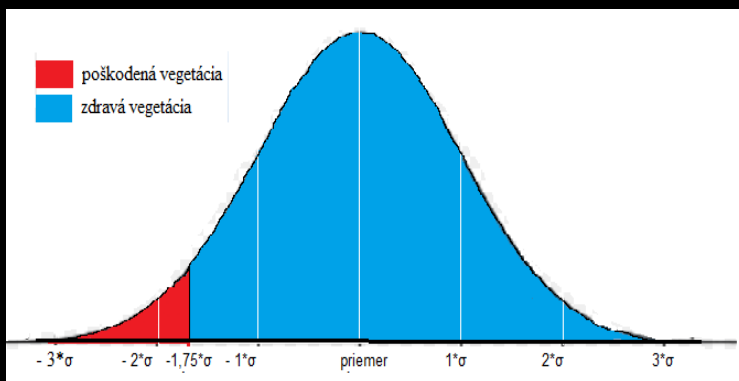
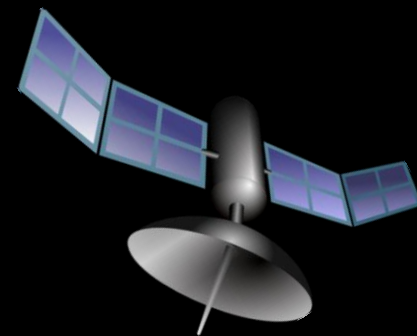
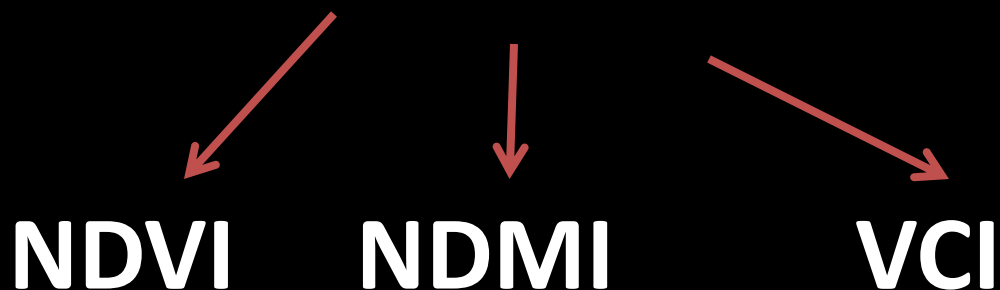
Ako detekovať poškodenosť vegetácie pomocou
Landsat-u?

Referenčné dáta: Deriváty leteckých snímok

o.o. Javorina



Landsat



2) Reklasifikácia








Mean - 3, 2,75, 2.5, 2.25, 2, 1.75, 1.5* σ

3) Porovnanie s derivátmi



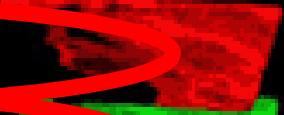

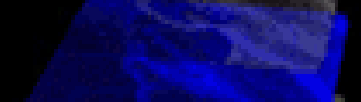


4) Aplikácia








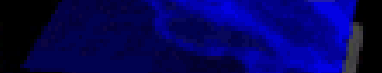
Klasifikácia poškodenia vegetácie - NDVI

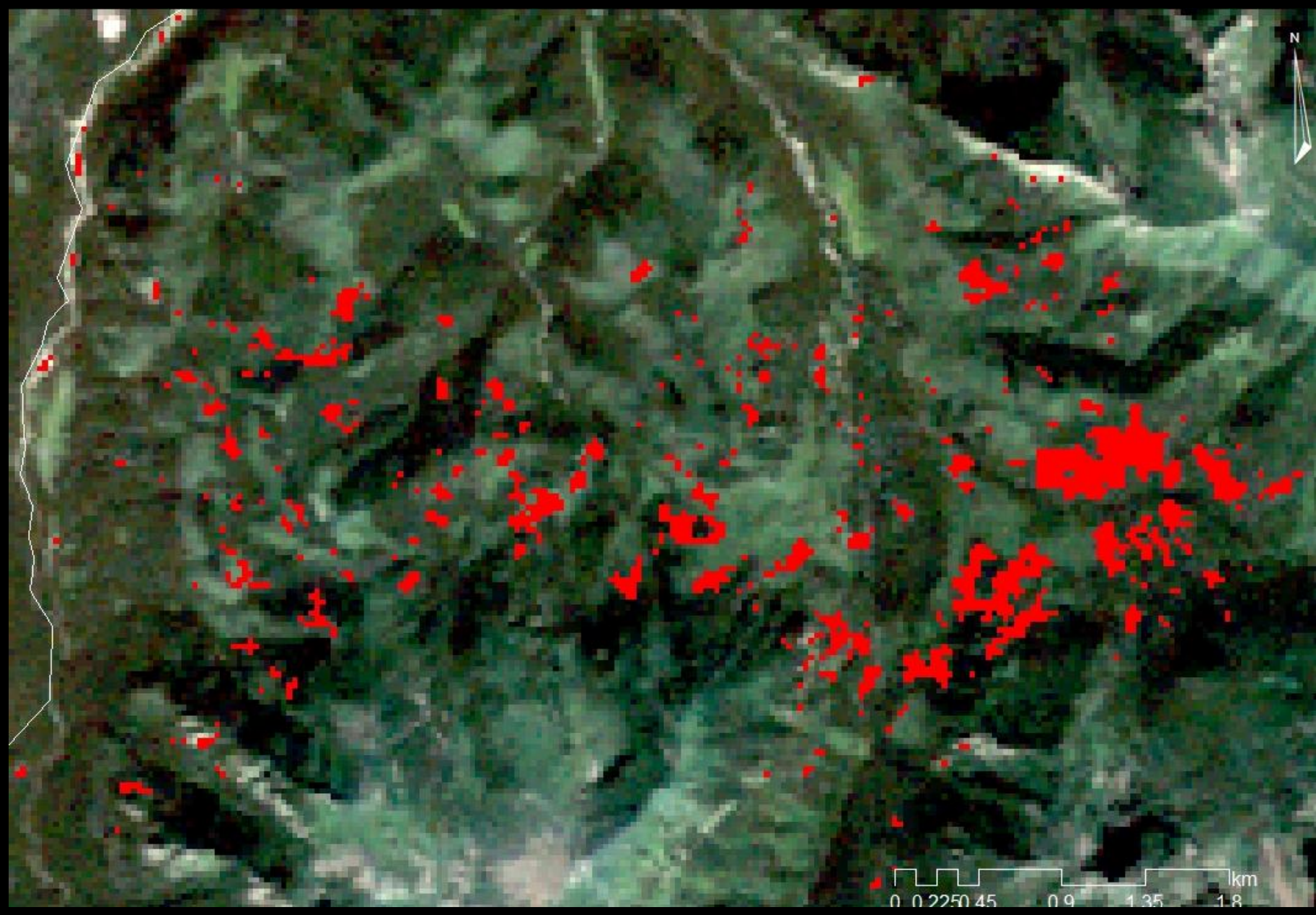
TM Band	Wavelength (um)		
6	10.4 - 12.5		Thermal Infrared
7	2.08 - 2.35		Shortwave Infrared
5	1.55 - 1.75		Shortwave Infrared
4	0.76 - 0.90		Near Infrared
3	0.63 - 0.69		Red
2	0.52 - 0.60		Green
1	0.45 - 0.52		Blue

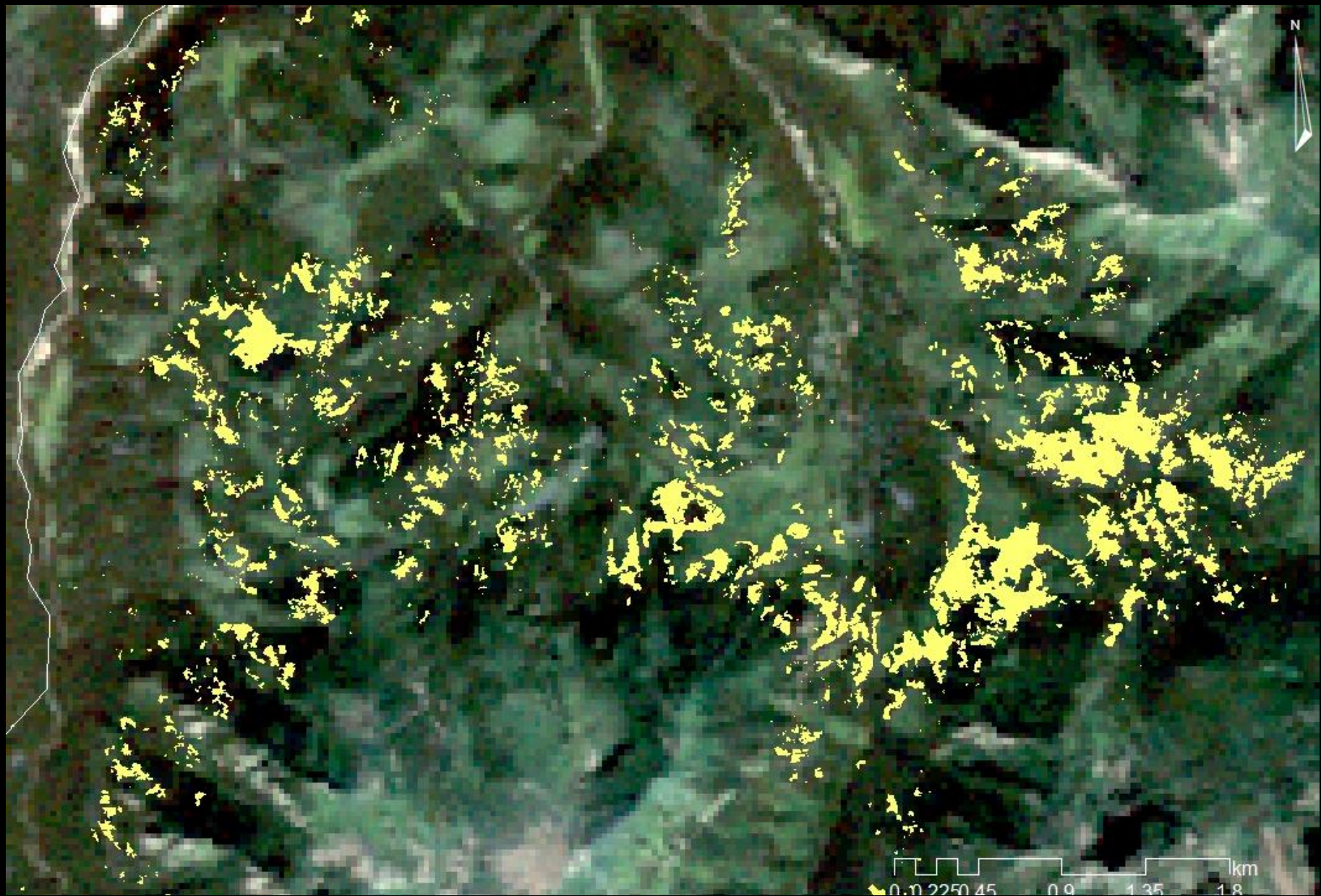
Klasifikácia poškodenia vegetácie - NDMI

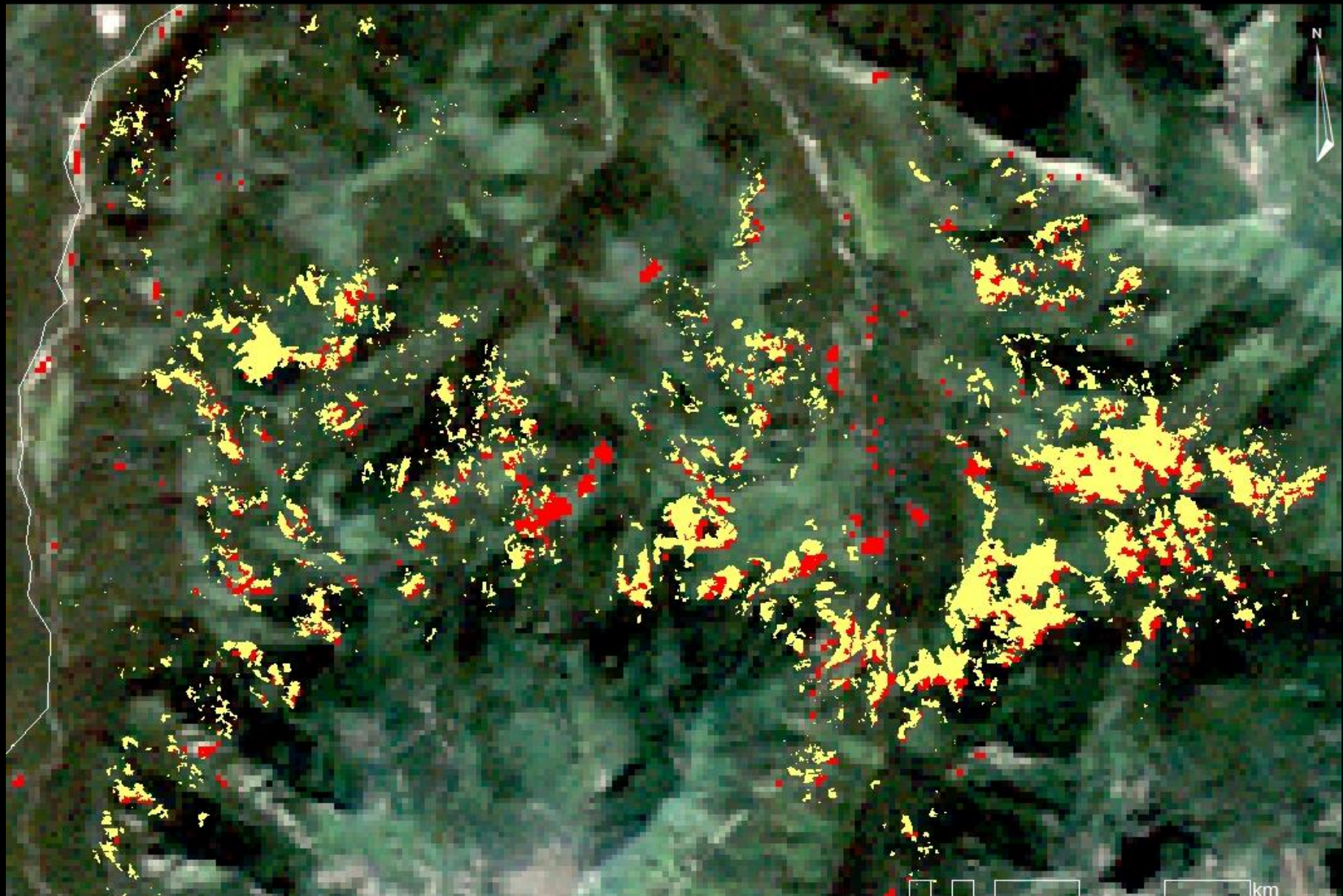
TM Band	Wavelength (um)		
6	10.4 - 12.5		Thermal Infrared
7	2.08 - 2.35		Shortwave Infrared
5	1.55 - 1.75		Shortwave Infrared
4	0.76 - 0.90		Near Infrared
3	0.63 - 0.69		Red
2	0.52 - 0.60		Green
1	0.45 - 0.52		Blue

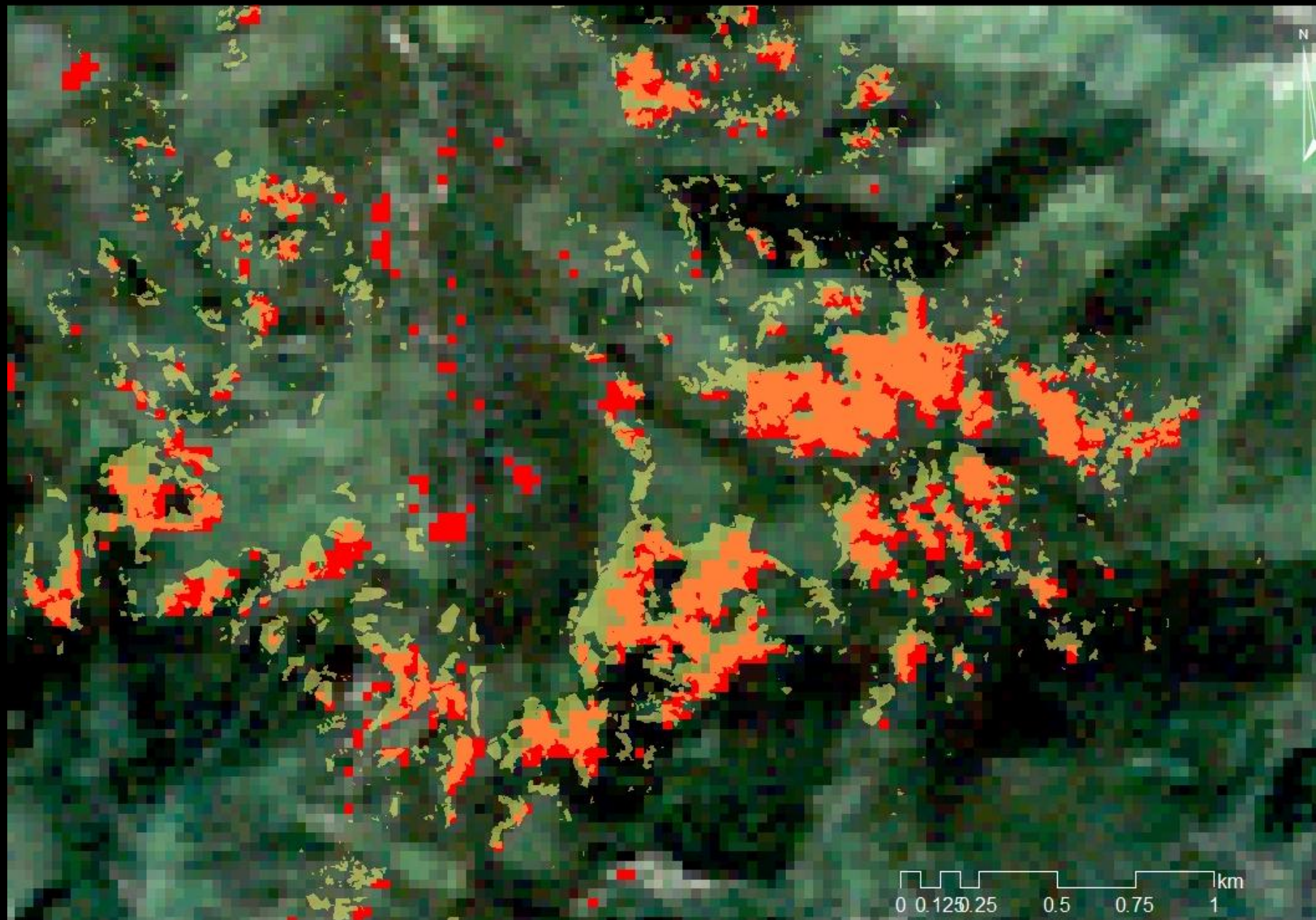
Klasifikácia poškodenia vegetácie - VCI

TM Band	Wavelength (um)		
6	10.4 - 12.5		Thermal Infrared
7	2.08 - 2.35		Shortwave Infrared
5	1.55 - 1.75		Shortwave Infrared
4	0.76 - 0.90		Near Infrared
3	0.63 - 0.69		Red
2	0.52 - 0.60		Green
1	0.45 - 0.52		Blue









Phi korelácia



Deriváty

NDVI

NDMI

VCI

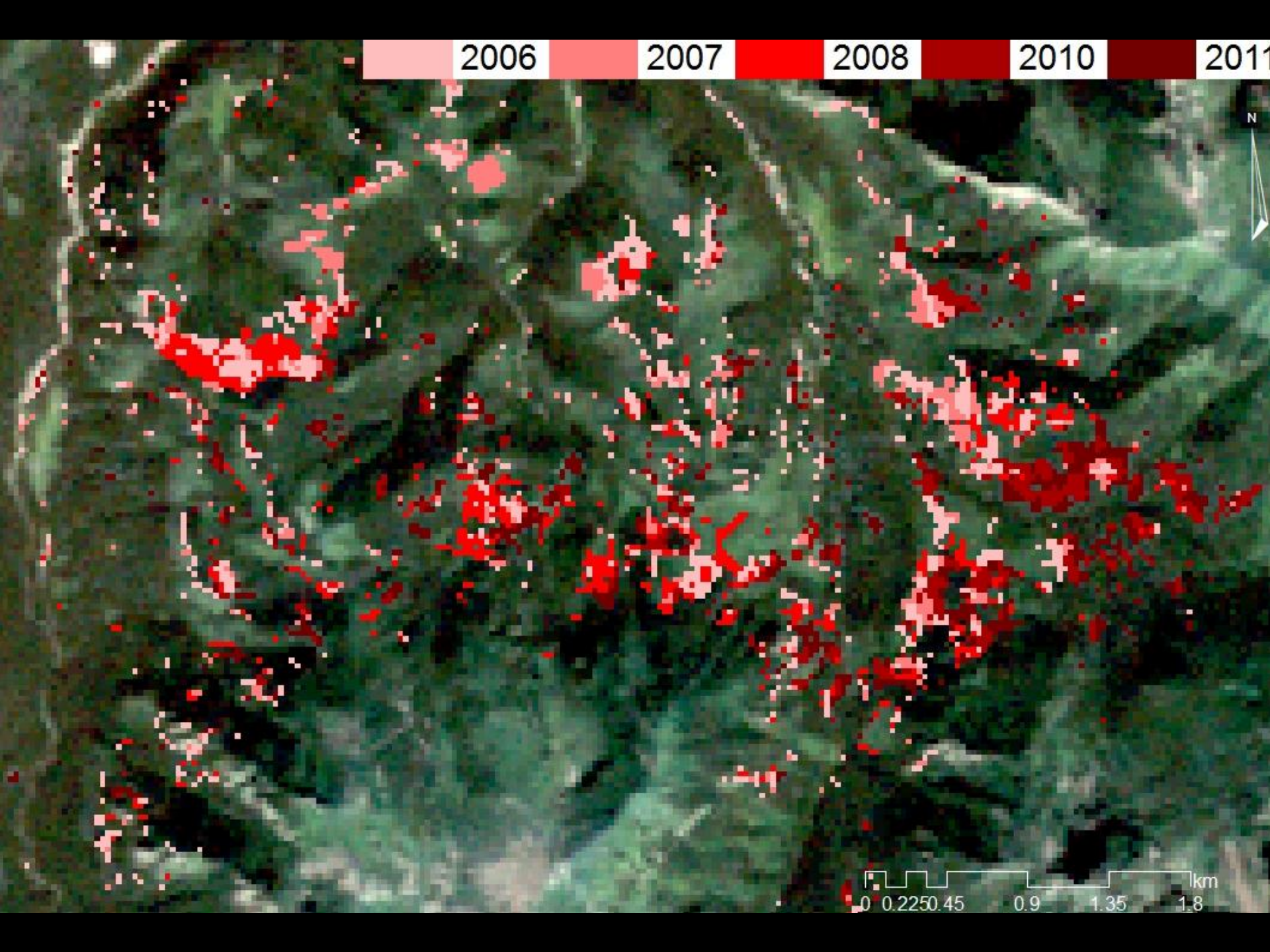
1	0	1	1
0	0	0	0
0	0	0	0
0	0	0	0
1	0	0	0
1	1	1	0
0	0	0	0
0	1	1	1

ANOVA

2 faktory

0 Zdravá vegetácia

1 Poškodená vegetácia



ANOVA

p-value

R²

vci11

0.21

vci07

0.68

ndvi11

0.05

ndvi07

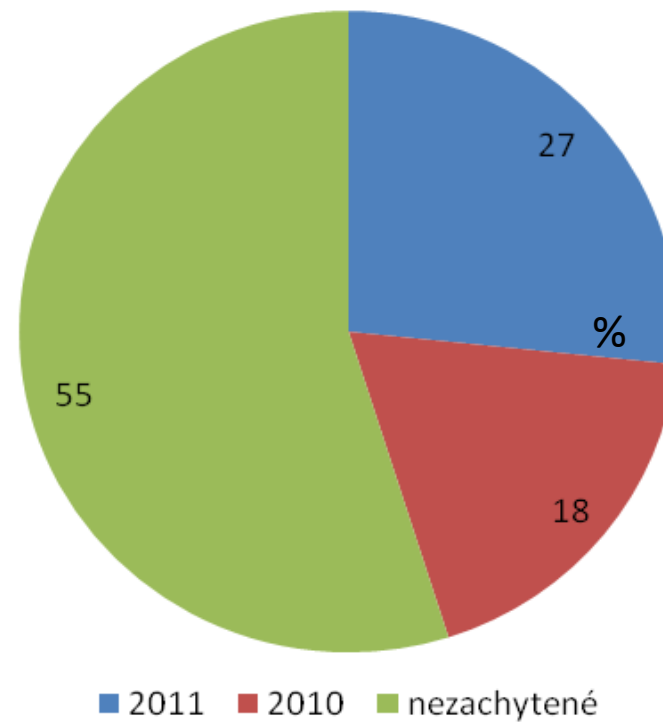
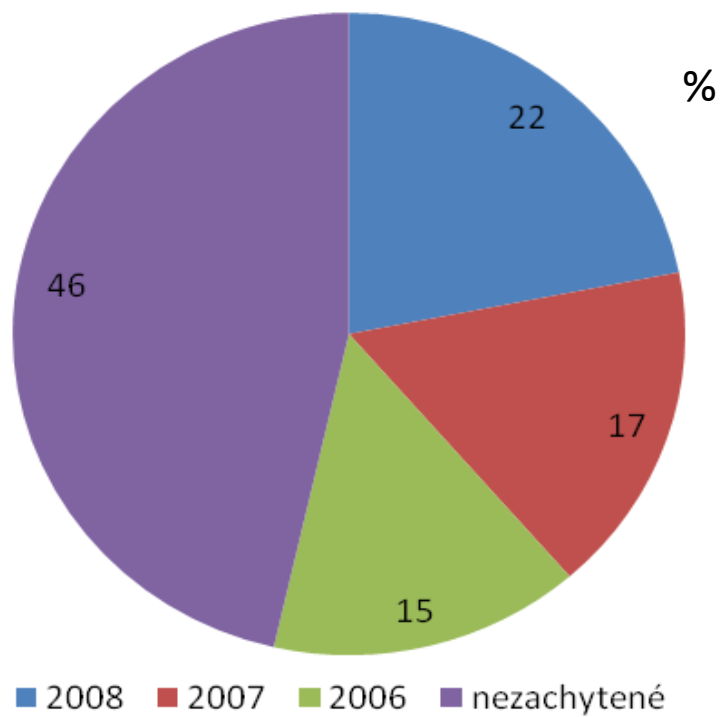
0.46

ndmi11

0.19

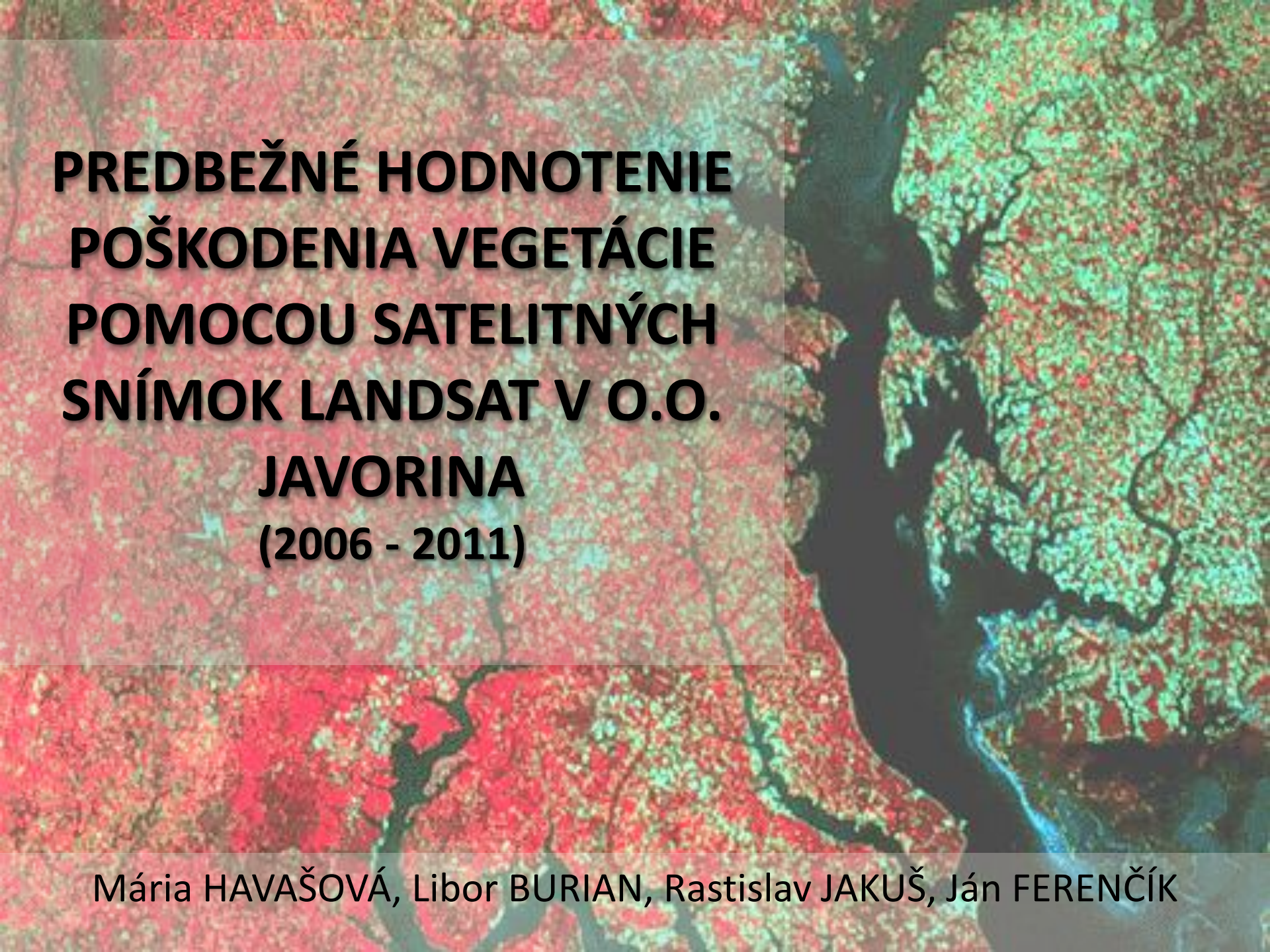
ndmi07

0.48



An aerial photograph of a river delta system. The water channels are dark blue/black. The surrounding land is covered in dense vegetation, with a prominent red color on the left side and a mix of green and yellow on the right side. The text 'ĎAKUJEM ZA POZORNOST' is overlaid in a semi-transparent red box at the bottom left.

ĎAKUJEM ZA POZORNOST

A satellite image of a forest landscape, likely in the Javorina region. The image shows a dense forest with a prominent river or stream winding through it. The vegetation is depicted in shades of red, green, and blue, indicating different levels of health or damage. The river is shown in dark blue/black. The overall scene is a top-down view of a natural environment.

**PREDBEŽNÉ HODNOTENIE
POŠKODENIA VEGETÁCIE
POMOCOU SATELITNÝCH
SNÍMOK LANDSAT V O.O.**

**JAVORINA
(2006 - 2011)**

Mária HAVAŠOVÁ, Libor BURIAN, Rastislav JAKUŠ, Ján FERENČÍK





