

REMOTE SENSING AS A SUPPORT FOR FOREST AND LAND MANAGEMENT

Robert Krajčovič
PHOTOMAP Ltd.



PHOTOMAP Ltd., Košice

2013 - 10th anniversary

2009 - member of GEODIS Group





WHAT WE DO?



REMOTE SENSING



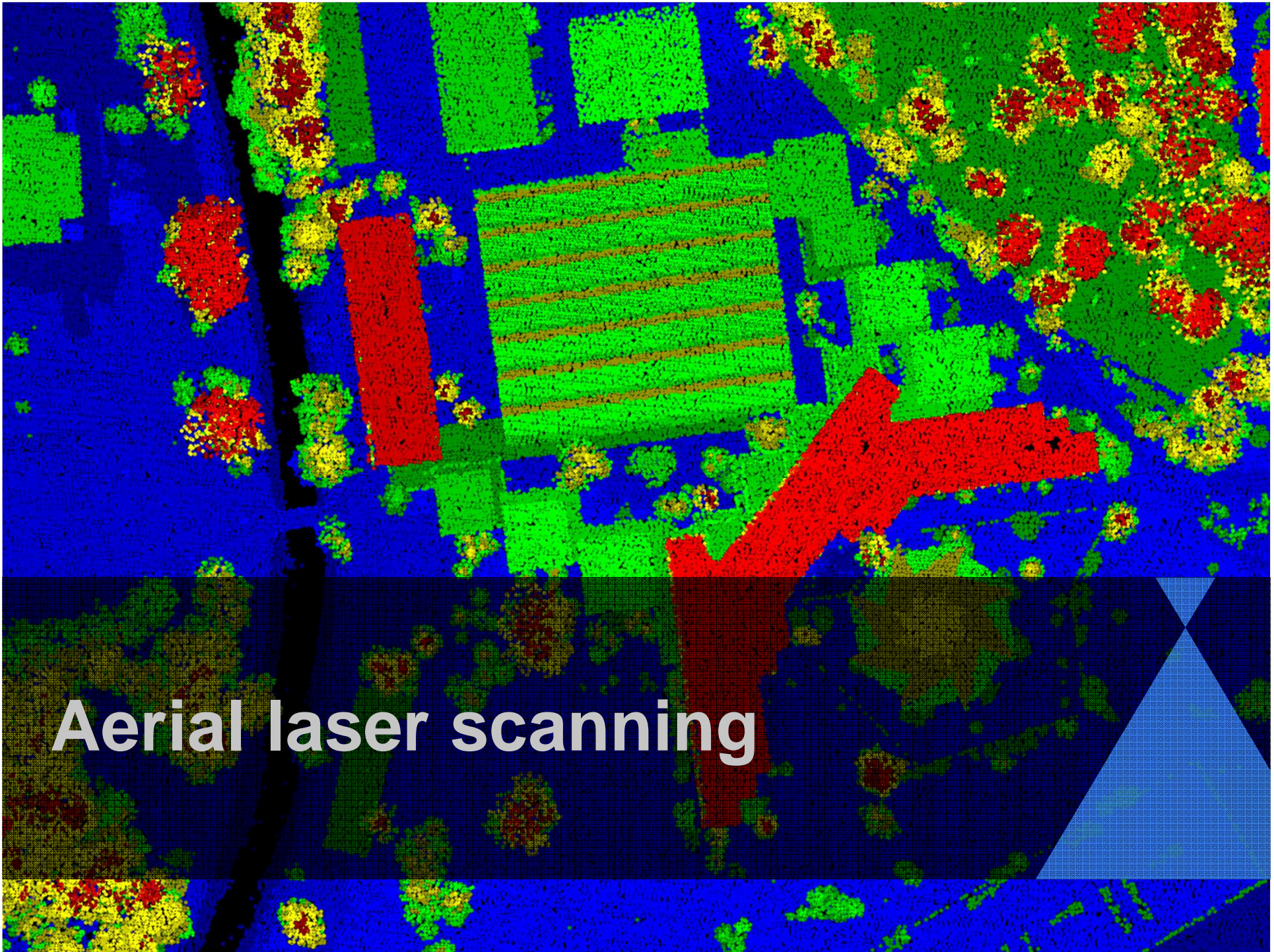
TUZVO & PHOTOMAP

2011 – 2014 project

5 methods



Aerial photography

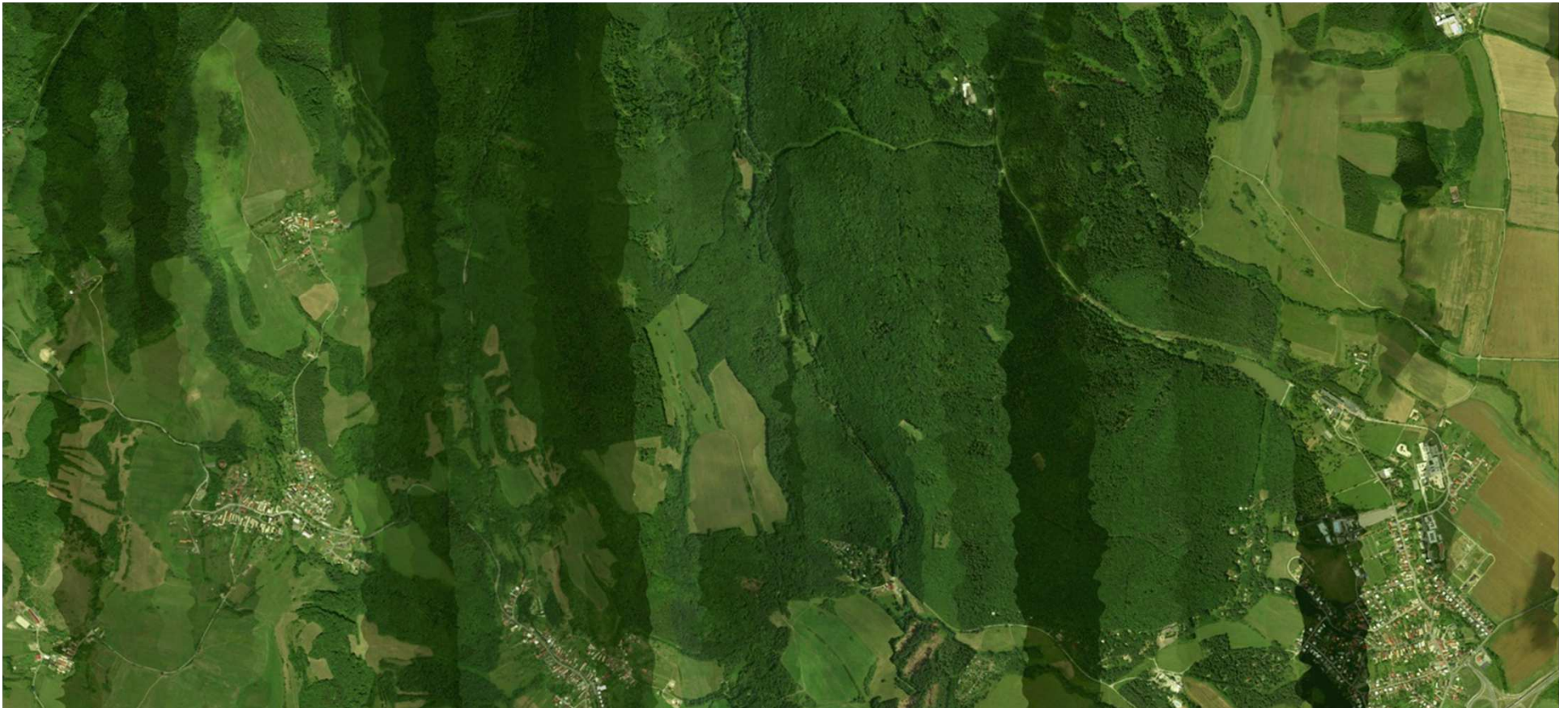


Aerial laser scanning



Satellite data





Hyperspectral scanning





Oblique images



Thermovision photography



TERESTRIAL, UNDERGROUND & MOBILE MAPPING

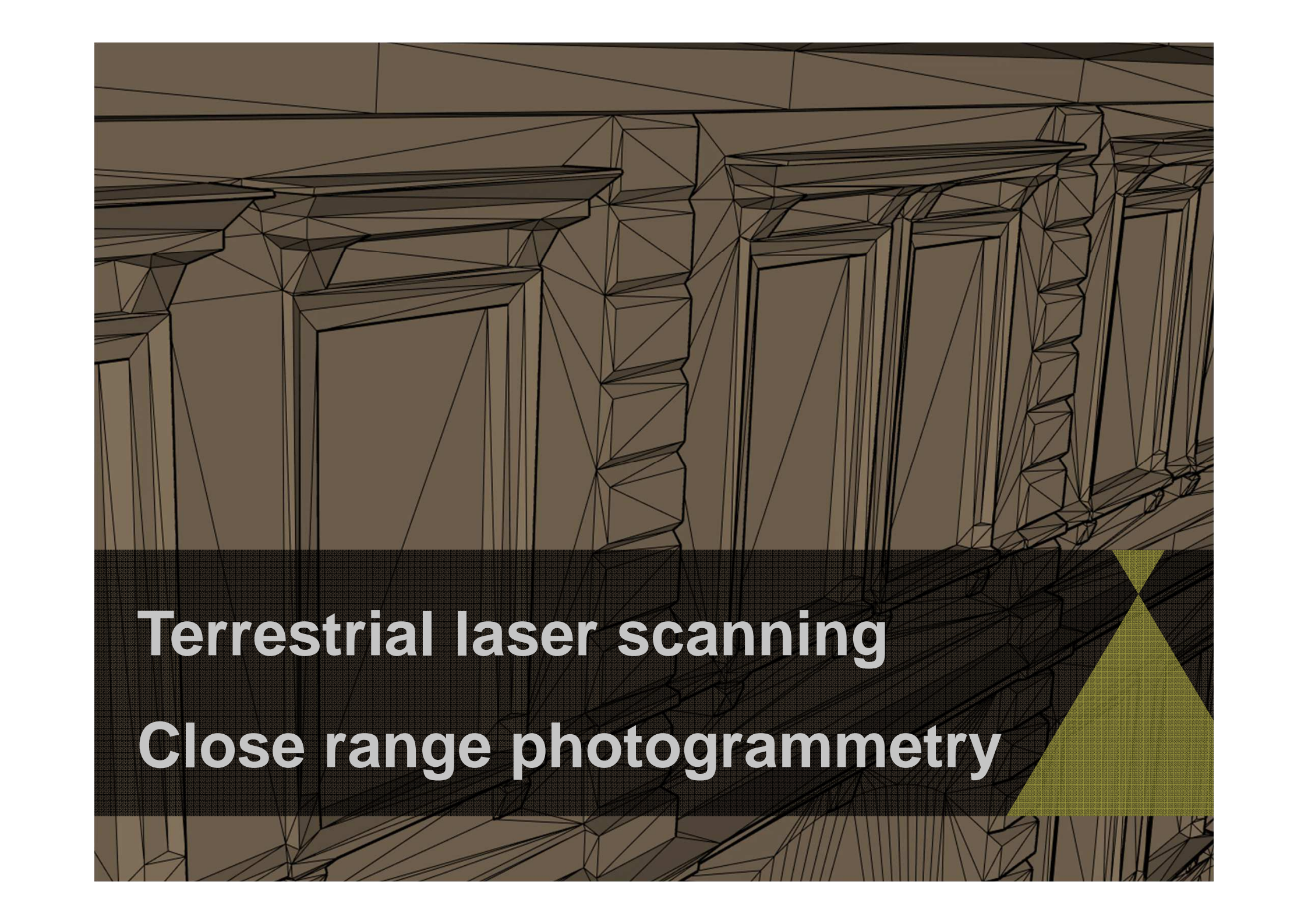


Geodesy

Cadaastre



Indoor mapping
Mobile mapping



Terrestrial laser scanning
Close range photogrammetry

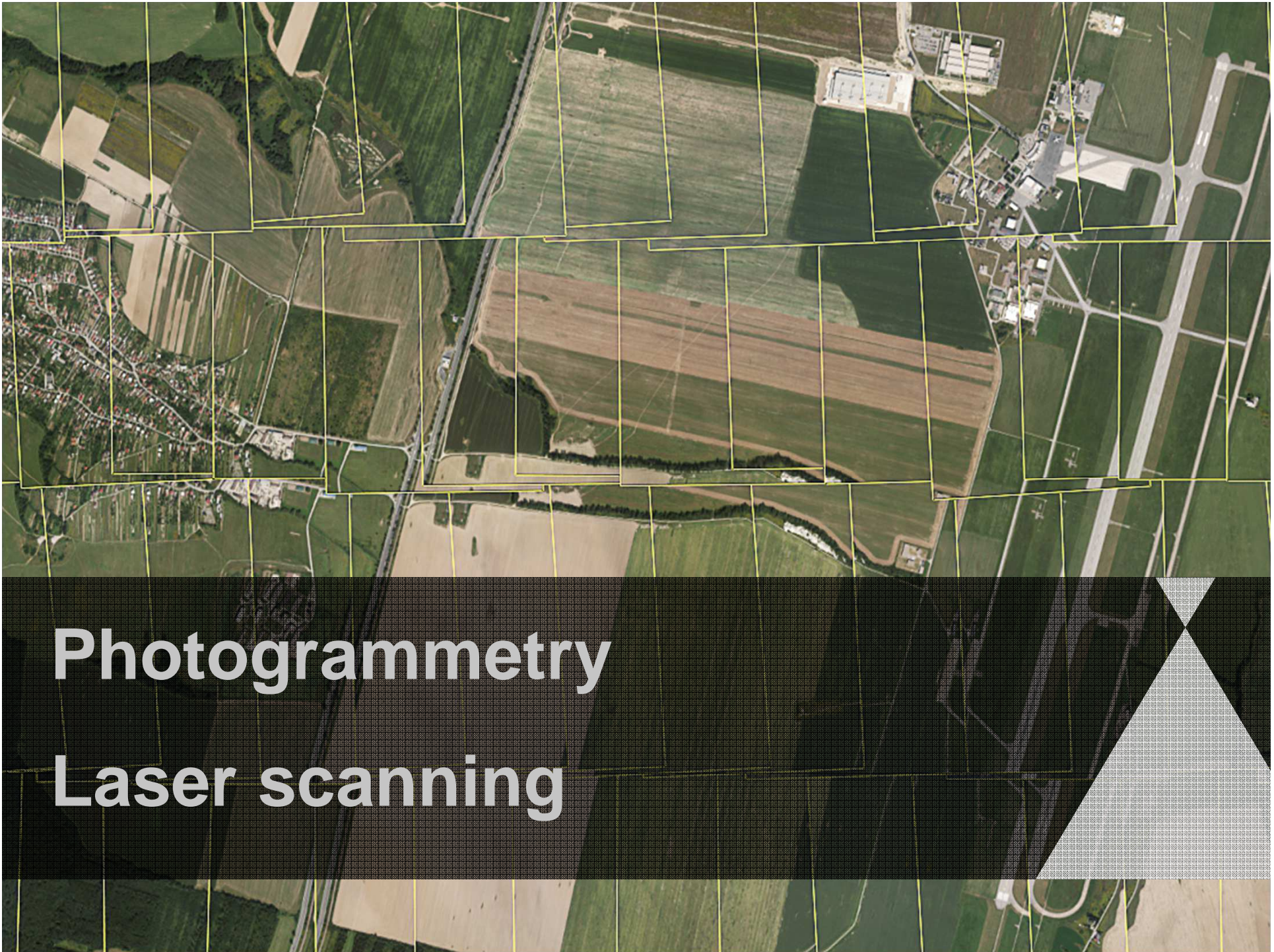


Open pit & mine mapping

Cave mapping



DATA POSTPROCESSING



Photogrammetry

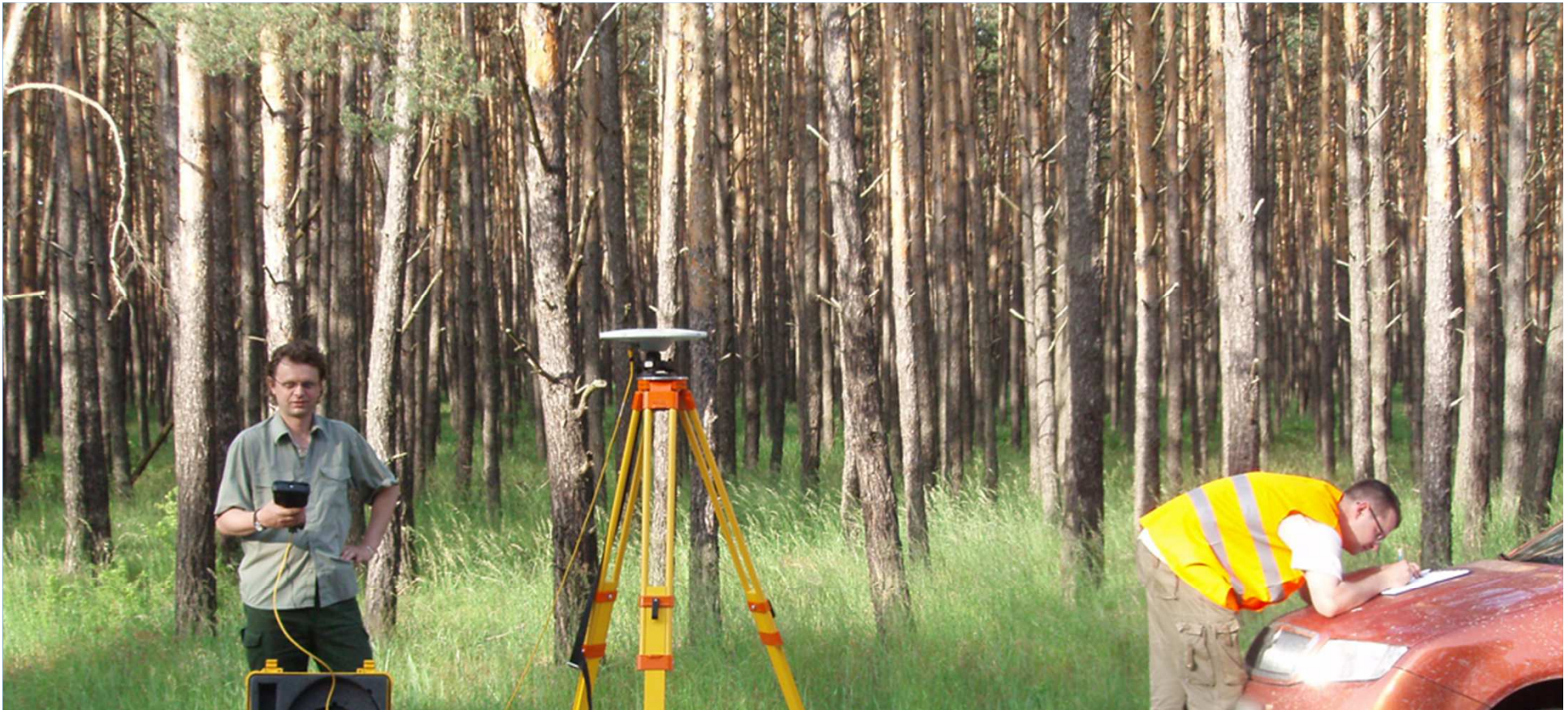
Laser scanning



**Mobile mapping
3D visualization**



OUR BUSINESS



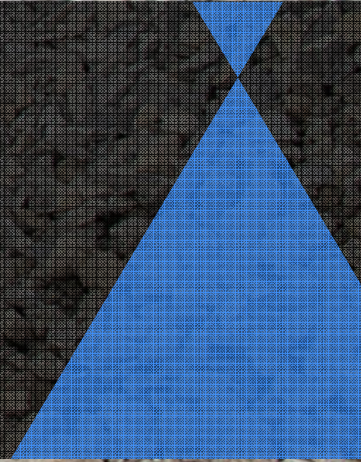
National Forest Center in Zvolen
Technical university in Zvolen
Military forests and Estates SR

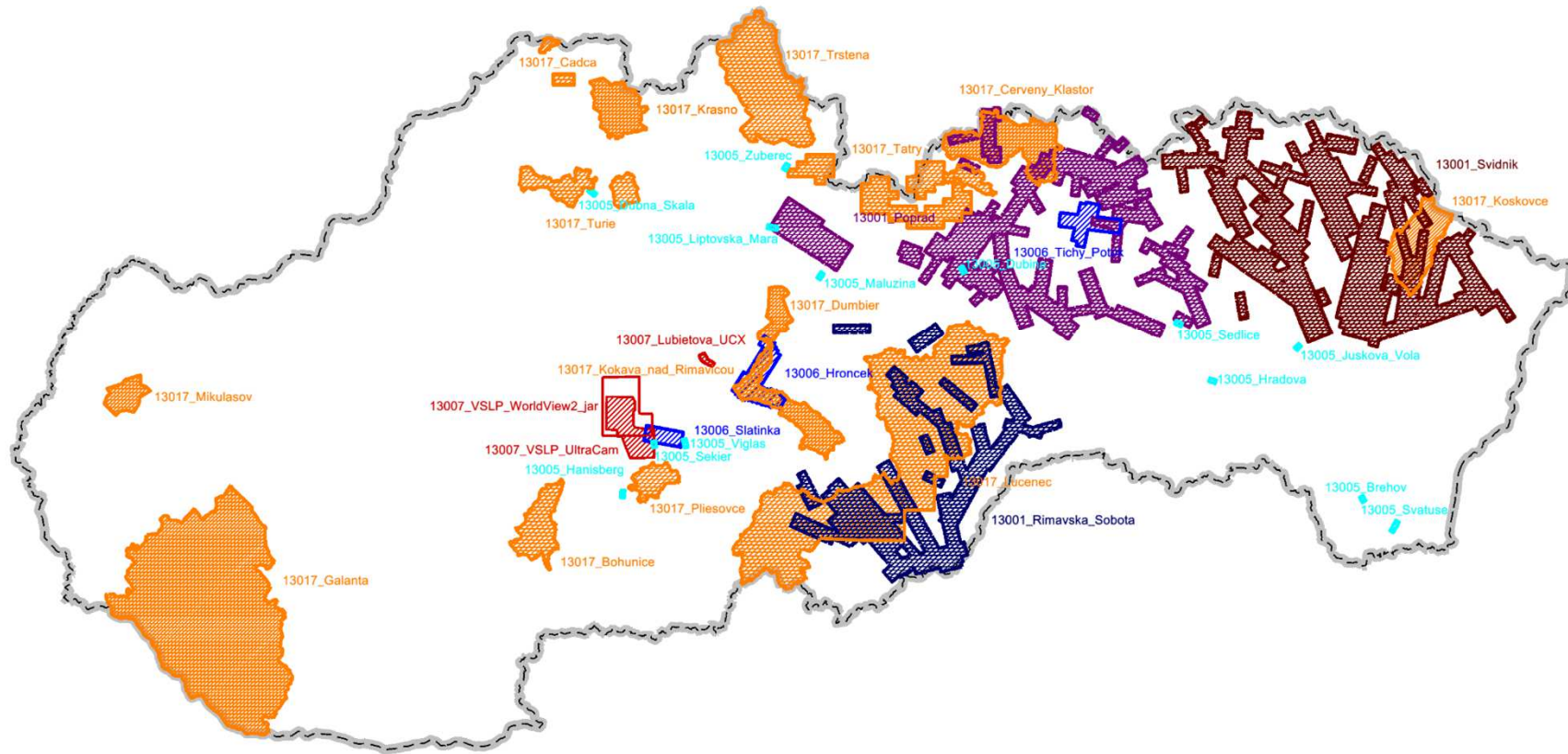


Ministry of Defence
Ministry of Agriculture & Rural Develop.
Ministry of Environment



Municipalities
Private companies
Mining companies





OUR LAST YEAR



letecké meračské snímkovanie
ortofotomapy a 3D vizualizácie
geodézia, kataster a GIS
banské meračstvo

PHOTOMAP

THANK YOU FOR YOUR ATTENTION

Robert Krajčovič

PHOTOMAP Ltd.

photomap.sk